



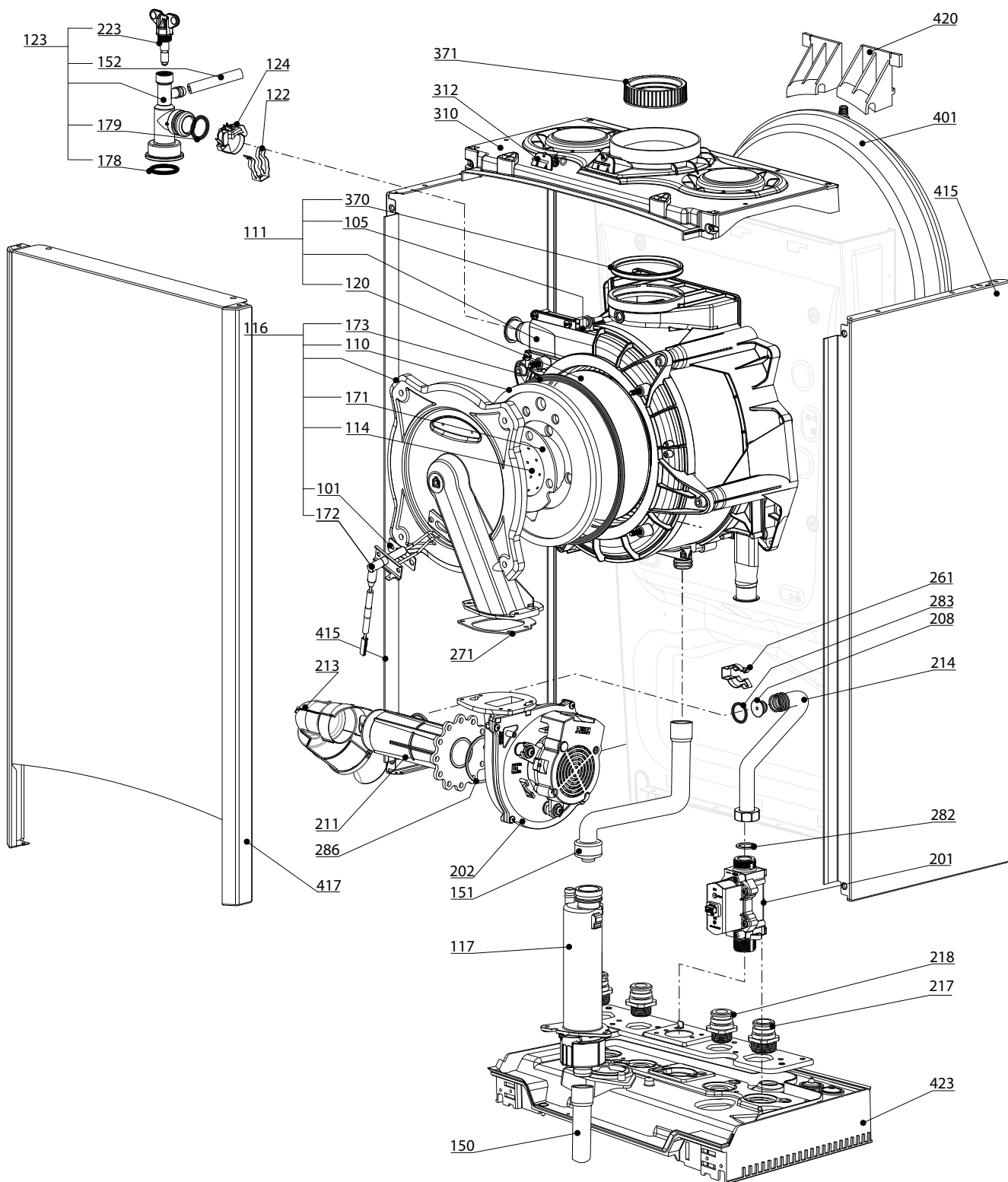
SPARE PARTS EXPLODED VIEW
GAS-WALL CONDENSING BOILERS
Model
CLAS ONE

R8203484-01 - 05/07/2017

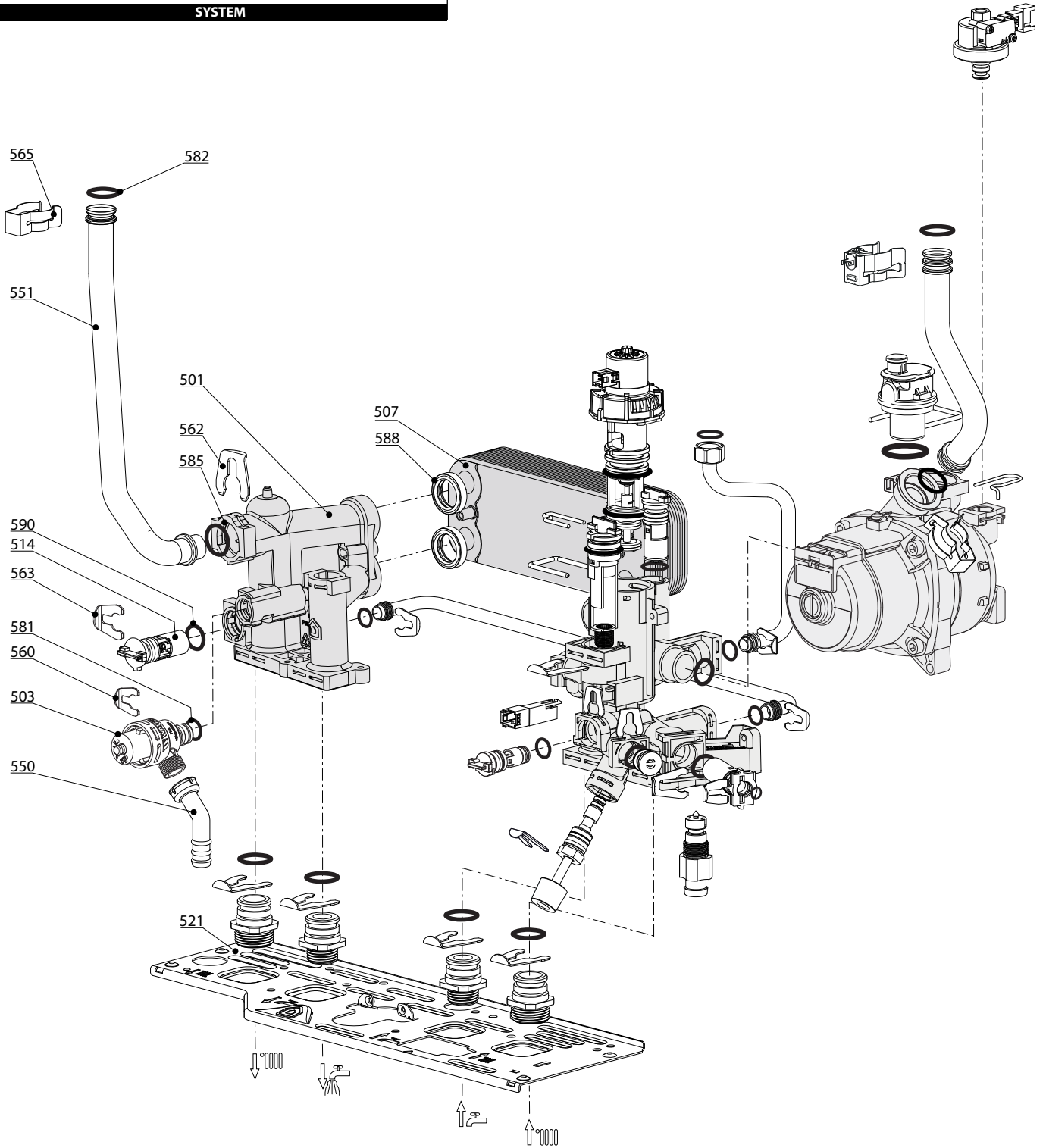
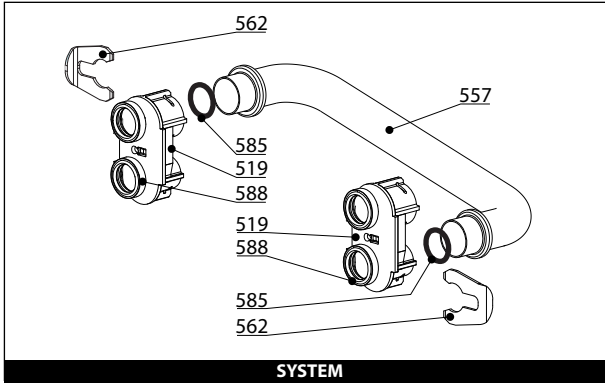
CLAS ONE

Gas-wall condensing boilers

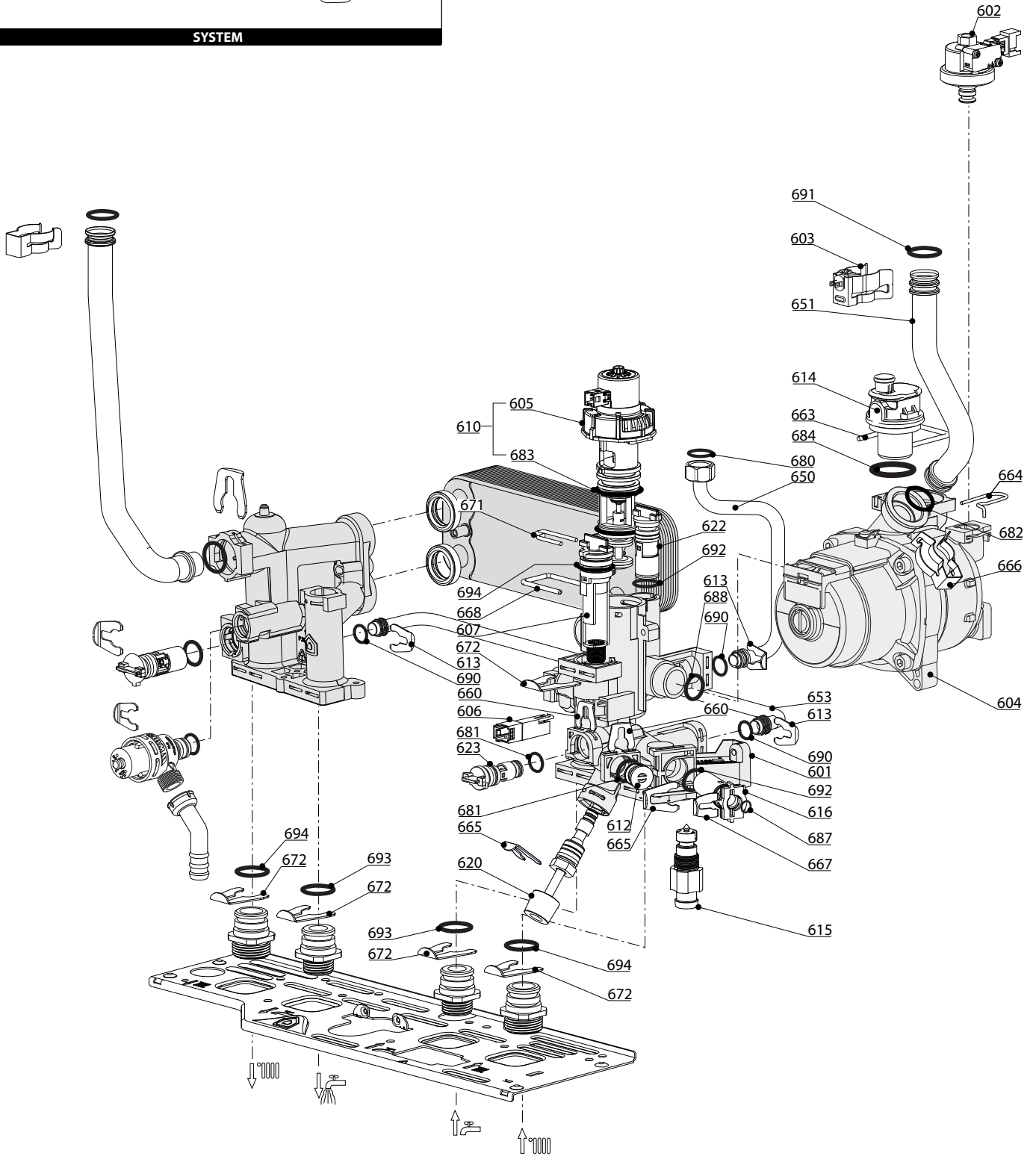
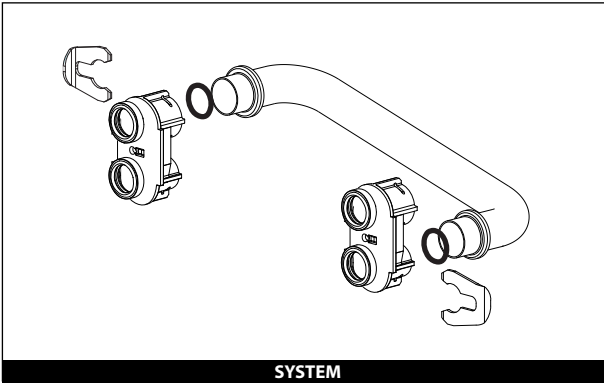
1	3301021	CLAS ONE 24		
1	3301116	CLAS ONE NET 24		
2	3301022	CLAS ONE 30		
2	3301117	CLAS ONE NET 30		
3	3301023	CLAS ONE 35		
4	3301030	CLAS ONE SYSTEM 18		
5	3301031	CLAS ONE SYSTEM 24		
6	3301035	CLAS ONE SYSTEM 30		
7	3301032	CLAS ONE SYSTEM 35		
Col	Reference	Model type	Begin	End

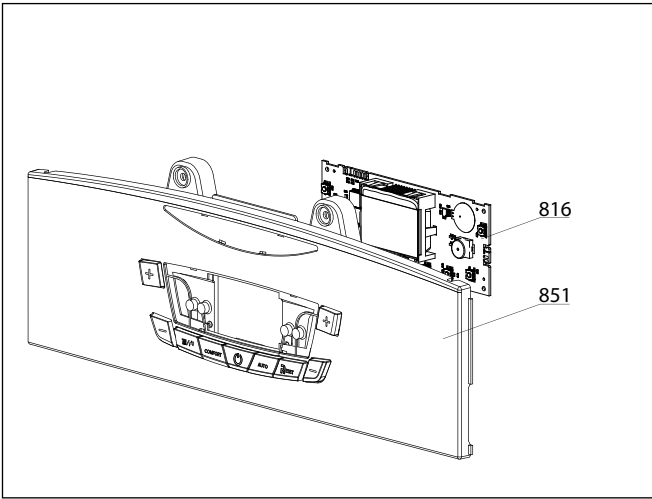
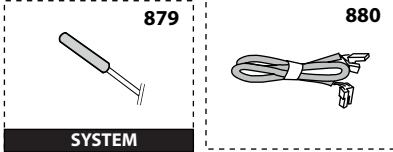
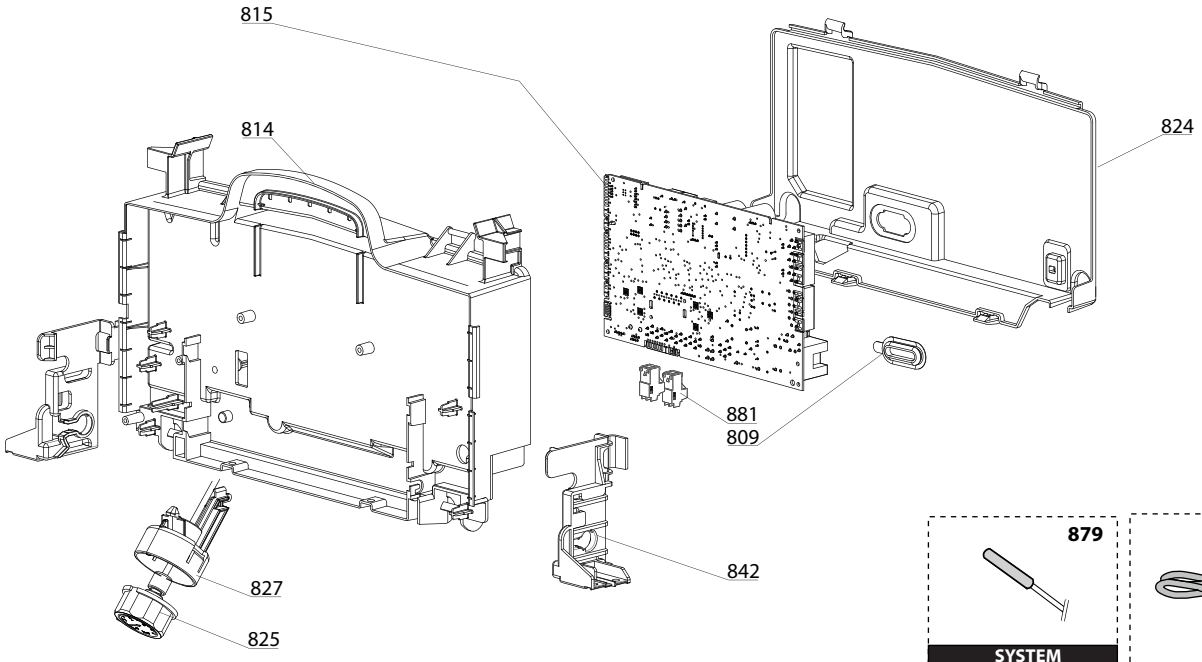


☉⇒	Description	Manf. Pt. N	Type	<div style="display: flex; justify-content: space-between; align-items: center;"> <div style="writing-mode: vertical-rl; transform: rotate(180deg); font-size: small;"> CLAS ONE-24 CLAS ONE-30 CLAS ONE-35 CLAS ONE SYSTEM 18 CLAS ONE SYSTEM 24 CLAS ONE SYSTEM 30 </div> <div style="border: 1px solid black; padding: 2px; font-weight: bold; font-size: x-small;">31</div> </div>																		From	to
				1	2	3	4	5	6	7	8	9	10	11	12	13	14	15	16	17	18		
0100	BURNER ASSEMBLY																						
0101	IGNITION ELECTRODE	65116595		●	●	●	●	●	●	●													
0110	INSULATING PANEL	65116512		●	●	●	●	●	●	●													
0111	EXCHANGER 24KW	65116695		●			●	●															
	EXCHANGER 30KW	65116696			●				●														
	EXCHANGER 35KW	65116697				●				●													
0114	BURNER 24KW	65116596		●			●	●															
	BURNER 30kW	65116603			●				●														
	BURNER 35KW	65116604				●					●												
0116	DOOR ASSY	65116515		●	●	●	●	●	●	●													
0117	CONDENSATE TRAP	65116516		●	●	●	●	●	●	●													
0120	PANEL (INSULATION - REAR)	65116047		●	●	●	●	●	●	●													
0122	CLIP	65116517		●	●	●	●	●	●	●													
0123	AUTO AIR VENT	65116518		●	●	●	●	●	●	●													
0124	TEMPERATURE PROBE + CLIP	990686-01		●	●	●	●	●	●	●													
0150	TUBE PVC D:19 L:500	60000976		●	●	●	●	●	●	●													
0151	FLEXIBLE PIPE	65116519		●	●	●	●	●	●	●													
0152	SILICONE PIPE D:8 L:330	65116520		●	●	●	●	●	●	●													
0171	GASKET	65116521		●	●	●	●	●	●	●													
0172	GASKET (IGNITION ELECTRODE)	65116263		●	●	●	●	●	●	●													
0173	DOOR GASKET	60000623		●	●	●	●	●	●	●													
0178	O-RING 17.86X2.62	61308091		●	●	●	●	●	●	●													
0179	O-RING D: 18-2.8	65116846		●	●	●	●	●	●	●													
0200	GAS SECTION																						
0201	GAS VALVE	60002799		●	●	●	●	●	●	●													
0202	FAN	65116558		●	●	●	●	●	●	●													
0211	VENTURI 24KW	65116597		●			●	●															
	VENTURI 30KW	65116605			●				●														
	VENTURI 35KW	65116606				●				●													
0213	SILENCER	65116598		●	●	●	●	●	●	●													
0214	GAS PIPE 24KW	65116599		●			●	●															
	GAS PIPE 30KW	65116607			●				●														
	GAS PIPE 35KW	65116608				●				●													
0217	UNION (3/4")	65114929		●	●	●	●	●	●	●													
0218	UNION (1/2")	65114930		●	●	●	●	●	●	●													
0223	DRAIN SCREW	65116528		●	●	●	●	●	●	●													
0261	CLIP	60000309		●	●	●	●	●	●	●													
0271	FAN GASKET	65116530		●	●	●	●	●	●	●													
0282	SHEET GASKET D: 24-18.2-1.5	60022835-01		●	●	●	●	●	●	●													
0283	O-RING 17,86X2,62	60002766		●	●	●	●	●	●	●													
0286	GASKET	60001878		●	●	●	●	●	●	●													
0300	FAN ASSEMBLY																						
0310	CASE COVER ASSY	65116531		●			●	●															
	CASE COVER ASSY	65116564			●	●			●	●													
0312	FLUE INTAKE PLUG	65104295		●	●	●	●	●	●	●													
0370	SEALING RING 80mm	60002815		●	●	●	●	●	●	●													
0371	GASKET	60000316		●	●	●	●	●	●	●													
0400	SEALED CASE																						
0401	EXPANSION VESSEL 8L	65104261		●	●	●	●	●	●	●													
0415	SIDE PANELS LEFT + RIGHT	65116600		●			●	●															
	SIDE PANELS LEFT + RIGHT	65116609			●	●			●	●													
0417	CASE PANEL (FRONT)	65116568		●	●	●	●	●	●	●													
0420	EXPANSION VESSEL SUPPORT	65116534		●	●	●	●	●	●	●													
0423	PLATE WIRE BOX	65116601		●			●	●															
	PLATE WIRE BOX	65116610			●	●			●	●													

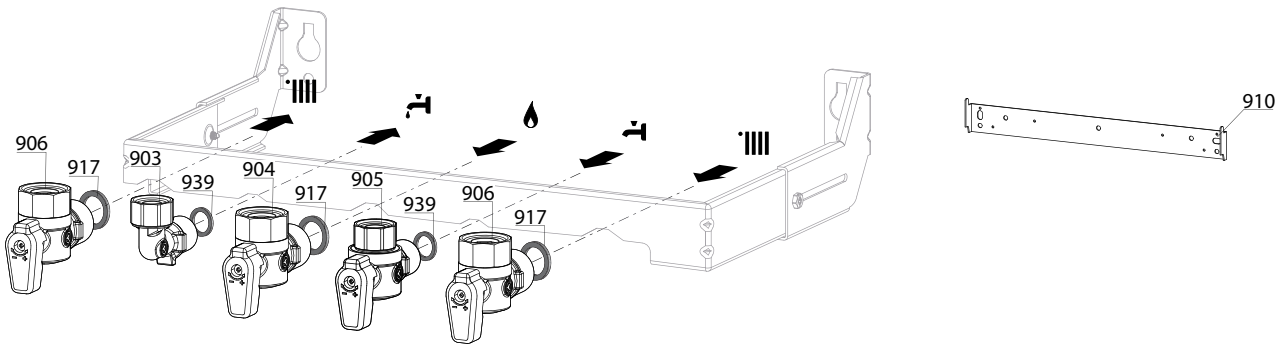


☉⇒	Description	Manf. Pt. N	Type	<div style="display: flex; justify-content: space-between; font-size: small;"> CLAS ONE 24 CLAS ONE 30 CLAS ONE 35 CLAS ONE SYSTEM 18 CLAS ONE SYSTEM 24 CLAS ONE SYSTEM 30 CLAS ONE SYSTEM 35 </div>																		From	to
				1	2	3	4	5	6	7	8	9	10	11	12	13	14	15	16	17	18		
0500	FLOW GROUP																						
0501	FLOW GROUP	65115933		•	•	•	•	•	•	•	•												
0503	PRESSURE RELIEF VALVE (3 BAR)	61312668		•	•	•	•	•	•	•	•												
0507	SANITARY HEAT EXCHANGER (16 P.)	65116537		•	•	•																	
0514	BY-PASS	65114917		•	•	•	•	•	•	•	•												
0519	INTERFACE 'System +' Open	60001365					•	•	•	•	•												
0521	HYDRAULIC SUPPORT BRACKET	65116538		•	•	•	•	•	•	•	•												
0550	PIPE (SAFETY VALVE OUTLET)	60001955		•	•	•	•	•	•	•	•												
0551	PIPE (C.H. FLOW) 24KW	65116539		•			•	•															
	PIPE (C.H. FLOW) 30KW	65116569			•				•														
	PIPE (C.H. FLOW) 35KW	65116578				•				•													
0557	PIPE	65115935					•	•	•	•	•												
0560	CLIP	65114933		•	•	•	•	•	•	•	•												
0561	CLIP	61307589		•	•	•	•	•	•	•	•												
0562	CLIP D:18	65104259		•	•	•	•	•	•	•	•												
0563	CLIP	65114932		•	•	•	•	•	•	•	•												
0581	O-RING 17.96X2.62	65104337		•	•	•	•	•	•	•	•												
0582	O-RING 17.86X2.62	61308091		•	•	•	•	•	•	•	•												
0585	O-RING 17.04X3.53	65104262		•	•	•	•	•	•	•	•												
0588	EXCHANGER GASKET	65114928		•	•	•	•	•	•	•	•												
0590	O-RING 11.91X2.62	65114940		•	•	•	•	•	•	•	•												





900



5000



LIST OF THE ABBREVIATIONS

HW	: Hot water.
CW	: Cold water.
C	: Ceramic resistance (normal heating).
Ca	: Ceramic resistance (accelerated heating)
TP	: Immersion heater.
1F	: With fittings.
2F	: Without fittings.
3F	: With fittings and another outlet connection.
AMI	: With mixing valve.
SMI	: Without mixing valve.
PUISS	: Power of th appliance.
PN	: Appliance with normal pression.
LP	: Appliance with low pression.
PV	: Appliance with variable power.
PF	: Appliance with fixed power.

IDENTIFICATION PLATE

SERIAL NUMBER

10 Characters :	04 05 125 011		
		Sequential number	
		Manufacturing day	
		Year of manufacture	
11 Characters :	1 95 065004 - 31		
Month of manufacture :		Technical number of the appliance	
from 1 to 9 → Jan. to Sep.,		Sequential number	
O → Oct., N → Nov.,		Year of manufacture	
D → Dec.			
19 Characters :	08 05 0013199 900640031		
Year of manufacture		Product reference	
Month of manufacture		Sequential number	
20 Characters :	3675007 XX 2 07 070 00315		
Product reference		Sequential number	
Millenium of manufacture		Manufacturing day	
		Year of manufacture	
21 Characters :	3675007 XX 07 070 0000315		
Product reference		Sequential number	
Year of manufacture		Manufacturing day	